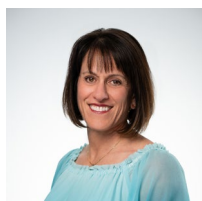


2024

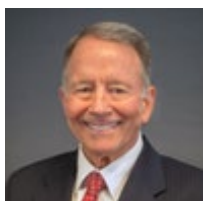
TUCSON AIRPORT AUTHORITY

M E M B E R S H I P

BOARD OF DIRECTORS



CHAIR
Keri Silvyn
Partner
Lazarus & Silvyn, P.C.



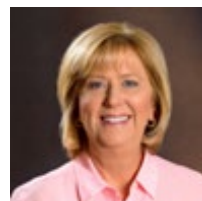
VICE CHAIR
Michael S. Hammond
Founder/Principal
Cushman & Wakefield/PICOR
Commercial Real Estate Services



SECRETARY
Phil Swaim
President
Swaim Associates, Ltd.



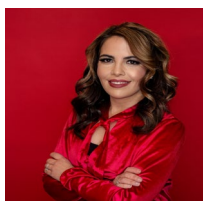
TREASURER
Vance L. Falbaum
Managing Director & Financial Advisor
Falbaum Investment Group
RBC Wealth Management



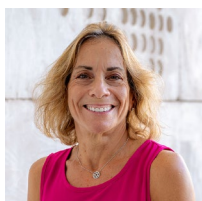
DIRECTOR
Judy Rich
Retired



DIRECTOR
Todd Jackson
Attorney
Jackson & Oden, P.C.



DIRECTOR
Calline Sanchez
Vice President of
TLS Global Logo Product Management &
Strategy, Infrastructure
IBM



DIRECTOR
Francine Katz
Chief Development Officer
Tucson Jewish Community Center



DIRECTOR
Rhonda L. Piña
Deputy Director
Pima County Workforce Development



DIRECTOR
Ellen K. Wheeler, J.D.
Retired

2024 ACTIVE MEMBERS

Lydia Aranda
Co-Founder and Principal
DiVeritas Group

Cristina Baena
President of Employee Benefits and
Partner
Crest Insurance Group

Teresa Bravo
Government Relations Representative
Tucson Electric Power

Larry Cesare
Partner and General Manager
B.H.C. Hotel Management

Francis X. Chambers
Aviation Consultant and Director
AvPORTS and Aviation Facilities Co.
(AFCO), Inc.

***Steven R. Cole**
President
Southwest Appraisal Associates

Rob L. Draper
President and Dealer Principal
O'Reilly Motor Co.
O'Reilly Chevrolet, Inc.

Michael J. Duran
Retired

Rob Elias
President and CEO
Tucson Hispanic Chamber of
Commerce

Vance L. Falbaum
Managing Director and Financial
Advisor
Falbaum Investment Group -
RBC Wealth Management

Guillermo P. Figueroa
Senior Network Implementation
Program Manager
Lumen Technologies

Continued on next page

2024

TUCSON AIRPORT AUTHORITY

M E M B E R S H I P

2024 ACTIVE MEMBERS CONT.

Isaac Figueroa

Director of Leasing and Sales
Larsen Baker Commercial Real Estate

Michael W. Franks

Principal
Seaver Franks Architects

Angela Gee

Architect, Founder and Principal
Dean Alan Architects

David E. Hameroff

Attorney
The Hameroff Law Firm, P.C.

Michael S. Hammond

Founder and Principal
Cushman and Wakefield/PICOR
Commercial Real Estate Services

Michael F. Hannley

Founder
Bank of Tucson

Brandt Hazen

President
Hazen Enterprises, Inc.

Steven Holmes

Deputy County Administrator
Pima County

Todd Jackson

Attorney
Jackson and Oden, P.C.

Herb Kai

Manager
Kai Family Entities

Councilmember
Marana Town Council

Francine Katz

Chief Development Officer
Tucson Jewish Community Center

Gary Kippur

President
Tucson Iron and Metal

Trindy LeForge

Associate Director of Strategy and
Development
Raytheon

Michael Levin

CEO
The Port of Tucson

Rose Lopez

President and CEO
Intermountain Centers

***Lisa Lovallo**

Vice President and Market Manager
Cox Southern Arizona

David Lyons

Executive Vice President and
Regional President
National Bank of Arizona

Edmund Marquez

Owner
Edmund Marquez Allstate Agency

Nancy A. McClure

First Vice President
CBRE, Inc.

Michael McGrath

Partner and Board Chair
Mesch, Clark and Rothschild, P.C.

Timothy Medcoff

Attorney and Co-Managing Partner
Farhang and Medcoff Attorneys

Omar Mireles

President
HSL Asset Management

Karla Morales

Vice President
Arizona Technology Council

Shannon Murphy

Director of Sales and Marketing/
Designated Broker
Diamond Adventures, Inc.

Shaima Namazifard

Vice President of Business Services
Tucson Federal Credit Union

Tim J. Overton

Broker
Allen & Young Business Brokerage

Steve Pagnucco

Vice President of Operations
Universal Avionics

John C. Parker

Founding Partner
718 Partners L.L.C.

R. Tony Penn

President and CEO
United Way of Tucson and Southern
Arizona

Lea Márquez Peterson

Principal
Márquez Peterson Group

Commissioner
Arizona Corporation Commission

Rhonda L. Piña

Deputy Director
Pima County Workforce
Development

Ricardo Platt

Vice President, Strategic Partnerships,
Sales and Business Development
ED2 Corp.

Continued on next page

2024

TUCSON AIRPORT AUTHORITY

M E M B E R S H I P

2024 ACTIVE MEMBERS CONT.

Stephen E. Quinlan

Principal
Whisper Canyon Holdings L.L.C.

Chairman Emeritus
Long Realty Co.

Judy Rich

Retired

Calline Sanchez

Vice President of TLS Global Logo
Product Management and Strategy,
Infrastructure
IBM

Lesah Sesma-Gay

General Manager
Casino del Sol

Keri L. Silvyn

Partner
Lazarus and Silvyn, P.C.

David C. Smallhouse

Managing Partner
Miramar Ventures, L.L.C.

Lucinda J. Smedley

Publisher and Principal
TREND Report/Real Estate
Consulting Group

Carol Stewart

Vice President
Tech Parks Arizona
University of Arizona

Michael Stilb

President and Managing Director
CBRE-MAS Real Estate Services

Philip Swaim

President
Swaim Associates, Ltd.

***Taunya Villicaña**

Founder and CEO
Aspirational Wealth Management,
L.L.C.

Katherine R. Ward

Principal
GV Strategic Advisors

Ellen K. Wheeler, J.D.

Retired

Amanda Wiggins

President and CEO
Marana Chamber of Commerce

2024 EMERITUS MEMBERS

Judith K. Abrams
Larry R. Adamson, Esq.
Hal W. Ashton
William R. Assenmacher
Raymond Bernal
Elizabeth T. Bilby
Fred T. Boice
Henry K. Boice
Susan G. Boswell
John H. Bremond
Archibald M. Brown, Jr.
Chanda S. Budhabhatti
James J. Burns
Jack C. Camper
John L. Carter
Joseph R. Cesare
Stephen W. Christy
Ginny L. Clements
Jim H. Click, Jr.

Jack D. Davis
Richard Davis
Patty Doar
Darryl B. Dobras
Bruce L. Dusenberry
Katie Dusenberry
Stephen Eggen, Jr.
Robert A. Elliott
George Favela
Steven D. Fell
Sally G. Fernandez
Louise L. Francesconi
Edward S. Frohling
Peter V. Gallo
Jaime Esteban Gibbons
David Goldstein
Arthur L. Gonzales
Elizabeth Gonzalez
Dr. Thomas Grogan

Duff Hearon
Lawrence M. Hecker
Richard F. Imwalle
Lisa H. Israel
Charles Jackson
Daisy M. Jenkins
Robert Johnston
Darryl O. Jones
Rosemary J. Koberlein
Meg Olson Lee
Jan Leshar
Dr. Peter Likins
Humberto S. Lopez
David M. Lovitt, Jr.
Richard Lukso
D. June McLean
Sharon B. Megdal, Ph.D.
Chris Monson
Rebecca R. Montañó

Gary M. Munsinger, Ph.D.
Rick T. Myers, Jr.
James E. Neihart
R. B. "Buck" O'Rielly
Judy Patrick
Mary Levy Peachin
Charles M. Pettis
Gregory A. Pivrotto
Ernesto V. Portillo
Timothy J. Prouty
James F. Ronstadt
Karl G. Ronstadt
Joaquin Ruiz
Roberto C. Ruiz
Warren S. Rustand
Ronald K. Sable
James M. Sakrison
Rubin Salter, Jr.
John P. Schaefer, Ph.D.

S.L. Schorr
Christopher H. Sheafe
Ted Sitterley, Jr.
Jacob F. Struble
Steven Thu
Steven D. Touché
Izaro Urreiztieta
Mercy A. Valencia, Ed.D.
Richard S. Walden
Jonathan D. Walker
Michael R. Wattis
Paul Weitman
David T.C. Wright
Thomas A. Zlaket