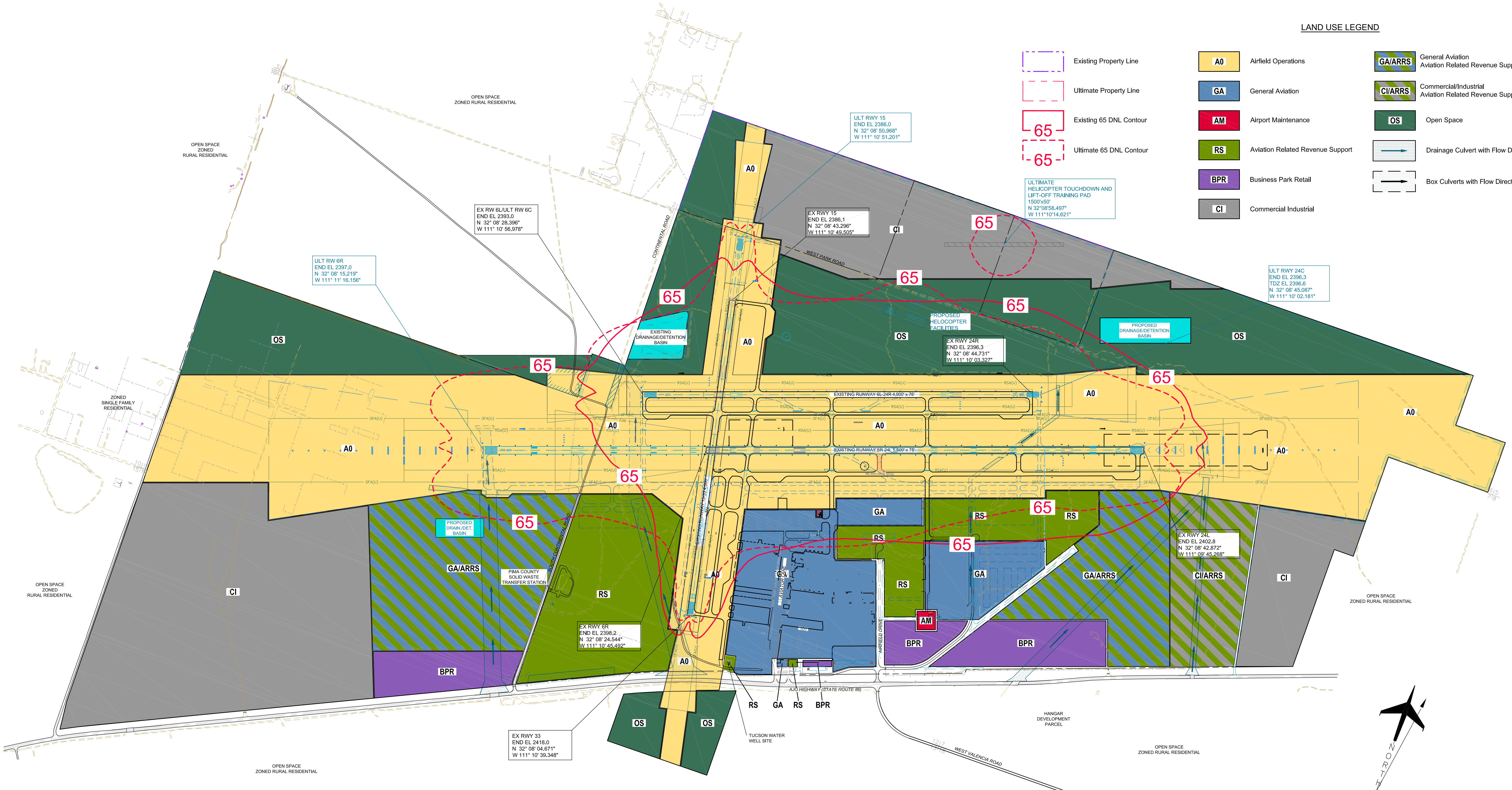
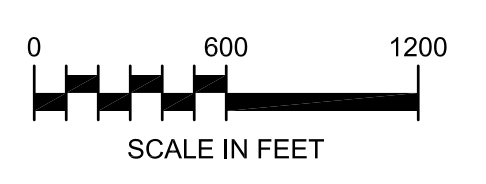


LAND USE LEGEND

- A0 Airfield Operations
- GA General Aviation
- AM Airport Maintenance
- RS Aviation Related Revenue Support
- BPR Business Park Retail
- CI Commercial Industrial
- GAJARRS General Aviation Aviation Related Revenue Support
- CIARRS Commercial/Industrial Aviation Related Revenue Support
- OS Open Space
- Drainage Culvert with Flow Direction
- Box Culverts with Flow Direction



Magnetic Declination  
 10° 47' East (June 2008)  
 Annual Rate of Change  
 00° 06' West (June 2008)



RYAN AIRFIELD

AIRPORT LAND USE DRAWING

Tucson, Arizona

2006 AIRPORT MASTER PLAN UPDATE - AIP# 28	DLH.	JMH	02/15/11
1999 AIRPORT MASTER PLAN UPDATE - AIP# N857	RAL	SGE	02/29/00
No.	REVISIONS	BY	DATE
*THE PREPARATION OF THESE DOCUMENTS WAS FINANCED IN PART THROUGH A PLANNING GRANT FROM THE FEDERAL AVIATION ADMINISTRATION AS PROVIDED UNDER SECTION 505 OF THE AIRPORT AND AIRWAY IMPROVEMENT ACT OF 1982, AS AMENDED. THE CONTENTS DO NOT NECESSARILY REFLECT THE OFFICIAL VIEWS OR POLICY OF THE FAA. ACCEPTANCE OF THESE DOCUMENTS BY THE FAA DOES NOT IN ANY WAY CONSTITUTE A COMMITMENT ON THE PART OF THE UNITED STATES TO PARTICIPATE IN ANY DEVELOPMENT DEPICTED HEREIN NOR DOES IT INDICATE THAT THE PROPOSED DEVELOPMENT IS ENVIRONMENTALLY ACCEPTABLE IN ACCORDANCE WITH APPROPRIATE PUBLIC LAWS.*			

PLANNED BY: Eric S. Pfeiffer  
 DETAILED BY: Diana L. Hopkins  
 APPROVED BY: James M. Harris

February 15, 2011 SHEET 18 OF 19

