

TUCSON INTERNATIONAL AIRPORT
Family Restrooms/Custodial Closets
Tucson Airport Authority
TAA Project #10217978
ARCHITECT'S JOB NO. 124
August 8, 2018

ADDENDUM TWO

In accordance with the Bid Documents, Bidders on the above-referenced project are hereby notified that the following Addendum, dated August 8, 2018 shall be made a part of the Bid Documents. Bidder shall acknowledge receipt of this Addendum on the Bid Form. Bidder shall return this Addendum along with any copies of drawings and specifications issued with the Addendum complete and in good condition at the time of bid submission.

- Item #1:** Working Drawings; Sheet T-1: Remove and Replace with attached Sheet – Revision 1 dated 30 July 2018.
- Item #2:** Working Drawings; Sheet A-1.3: Demolition Plan; Key Note “22-2” should read “22-3”.
- Item #3:** Working Drawings; Sheets A-2.3 & A-4 Rm. #414E: Provide solid backing for future grab bars “A”, “B”, & “C”.
- Item #4:** Working Drawings; Sheet P-1.2: Remove and Replace with attached Sheet – Revision 2 dated 31 July 2018.
- Item #5:** Working Drawings; Sheet P-2.3: Remove and Replace with attached Sheet – Revision 2 dated 31 July 2018.

End of Addendum Two

Respectfully Submitted;



08 Aug. 2018

Expires: 03:31:2021



TUCSON INTERNATIONAL AIRPORT

FAMILY RESTROOMS/CUSTODIAL CLOSETS

TAA PROJECT #10217978

7250 S. TUCSON BLVD.
TUCSON, ARIZONA 85756

ARCHITECT:

HERZOG ASSOCIATES, pllc
P.O. BOX 40971
TUCSON, AZ 85717
(520) 325-5847

CONSULTING ENGINEERS:

STRUCTURAL ENGINEER:

SCHNEIDER
STRUCTURAL ENGINEER
435 E. 9th Street | Tucson, AZ 85705 | 520.512.8183 | www.sastructural.com

MECHANICAL ENGINEER:

ADAMS
MECHANICAL AND FIRE PROTECTION ENGINEERS
6422 E. Speedway Blvd., Suite 130
Tucson, AZ 85710
(520) 323-9858
www.adamsengrs.com

ELECTRICAL ENGINEER:

MONRAD
CONSULTING ELECTRICAL ENGINEERS
1926 East Ft. Lowell Road, Suite 200
Tucson, Arizona 85719-2391
(520) 884-0045

EXISTING PLUMBING FIXTURE COUNT

LEVEL 1 PLUMBING					LEVEL 2 PLUMBING				
A-2	WC M 1:75	WC F 1:75	LAV 1:200	EDF 1:500	A-2	WC M 1:75	WC F 1:75	LAV 1:200	EDF 1:500
A-2 KITCHEN COM.	3	OCC			A-2 KITCHEN COM.	19	OCC		
TOTAL A-2	3 OCC.				TOTAL A-2	19 OCC.			
A-3	WC M 1:500	WC F 1:500	LAV 1:750	EDF 1:1000	A-3	WC M 1:500	WC F 1:500	LAV 1:750	EDF 1:1000
A-3 Bag Claim	2,198	OCC			A-3 Concourse	770	OCC		
A-3 Bag Handling	39	OCC			A-3 Waiting	3,633	OCC		
A-3 Concourse	440	OCC			A-3 Assembly	775	OCC		
A-3 Waiting	0	OCC			A-3 MPE	7	OCC		
A-3 Assembly	81	OCC			A-3 Storage	4	OCC		
A-3 MPE	68	OCC			TOTAL A-3	5,169 OCC.			
TOTAL A-3	2,826 OCC.								
B	WC M 1:25 / 1:50	WC F 1:25 / 1:50	LAV 1:40 / 1:80	EDF 1:100	B	WC M 1:25 / 1:50	WC F 1:25 / 1:50	LAV 1:40 / 1:80	EDF 1:100
B Accessory Stor.	12	OCC			B Offices	299	OCC		
B Offices	464	OCC			TOTAL B	299 OCC.			
TOTAL B	476 OCC.								
M	WC M 1:500	WC F 1:500	LAV 1:750	EDF 1:1000	M	WC M 1:500	WC F 1:500	LAV 1:750	EDF 1:1000
M Mercantile	0	OCC			M Mercantile	90	OCC		
TOTAL M	0 OCC.				TOTAL M	90 OCC.			
S-1	WC M 1:100	WC F 1:100	LAV 1:150	EDF 1:1000	S-1	WC M 1:100	WC F 1:100	LAV 1:150	EDF 1:1000
S-1 Merc. Stor.	12	OCC							
TOTAL S-1	12 OCC.								
TOTAL REQUIRED	11	11	13	8	TOTAL REQUIRED	11	11	12	9
TOTAL EXISTING	33	29	45	10	TOTAL EXISTING	53	49	75	10

NEW FIXTURES (THIS PROJECT):

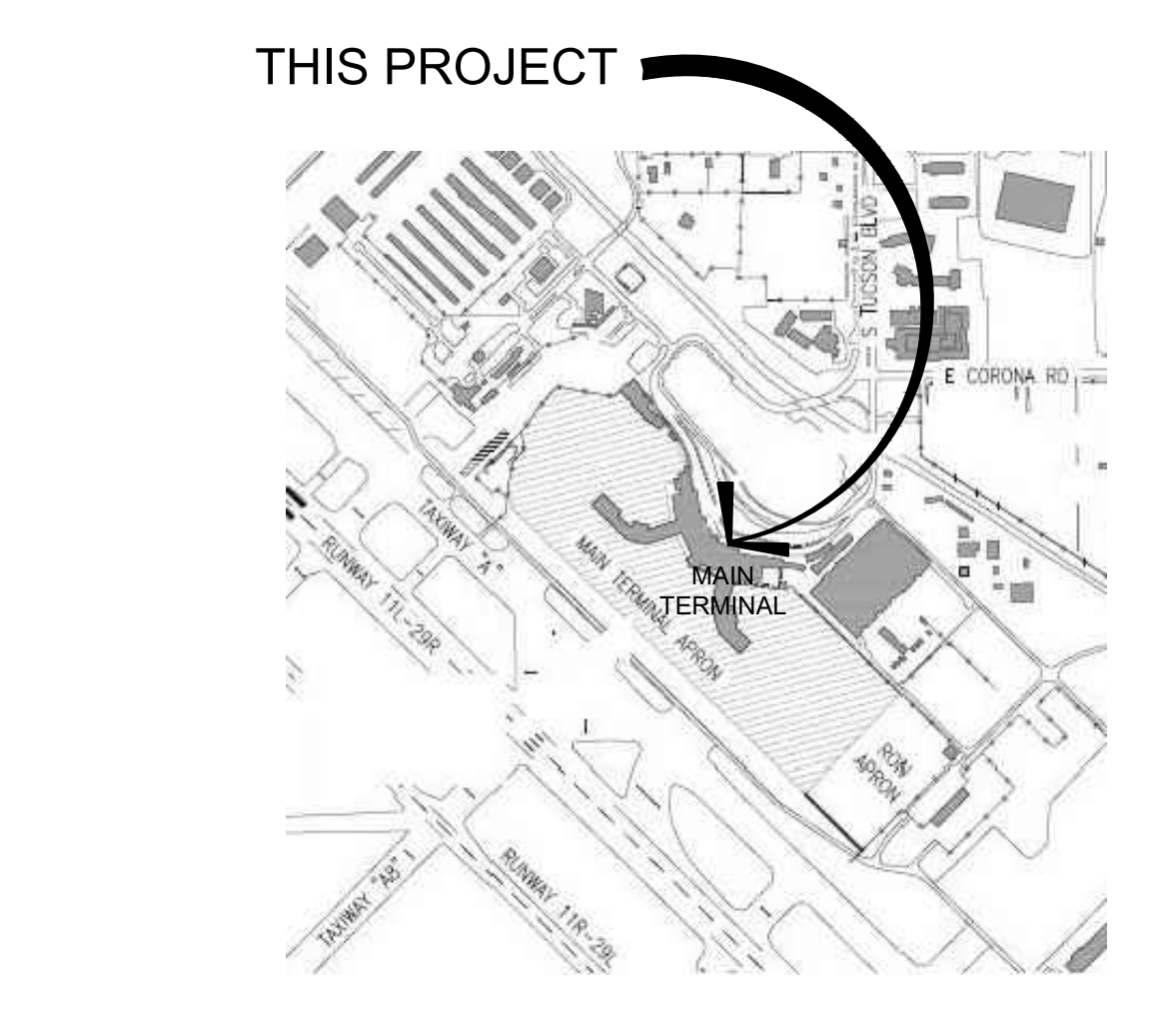
LEVEL	WC: UNISEX	LAV:	EDF:	SERVICE SINK
LEVEL 1	0	0		2 (REPLACED)
LEVEL 2	7	6	1 (RELOCATED)	2 (Pet Relief) 1 (REPLACED) 1 (REMOVED)

INDEX TO DRAWINGS:

Sheet	Description
T1 Sht. 1 of 42	Title Sheet, Location Plan, Index to drawings Code Check.
ARCHITECTURAL:	
A1.0 Sht. 2 of 42	Overall Plan, Level One, Demolition Notes
A1.1 Sht. 3 of 42	Enlarged Plans Rms. #TB1-205A, 207A, 210, & 214
A1.2 Sht. 4 of 42	Enlarged Plans Rms. #TA1-313, 314, 322A
A1.3 Sht. 5 of 42	Enlarged Plans Rms. #A1-224, B1-124
A2.0 Sht. 6 of 42	Overall Plan, Level Two
A2.1 Sht. 7 of 42	Enlarged Plans Rms. #TB2-130, 136, 176, & 176B
A2.2 Sht. 8 of 42	Enlarged Plans Rms. #TB2-154, 154A & 277
A2.3 Sht. 9 of 42	Enlarged Plans Rms. #TA2-410, 414A, B, C, D, E, B2-110, 111
A2.4 Sht. 10 of 42	Enlarged Plans Rms. #A2-203, 203A, 203B, 204
A3.0 Sht. 11 of 42	Door Schedule, Details
A3.1 Sht. 12 of 42	Types, Room Finish Schedule
A4.0 Sht. 13 of 42	Interior Elevations
A4.1 Sht. 14 of 42	Interior Elevations
MECHANICAL:	
M-1.0 Sht. 15 of 42	Overall Plan, Level One
M-1.1 Sht. 16 of 42	Enlarged Plans Rooms #TB1-205A, 207A, 210 & 214
M-1.2 Sht. 17 of 42	Enlarged Plans Rooms #TA1-313, 314 & 322A
M-2.0 Sht. 18 of 42	Overall Plan, Level Two
M-2.1 Sht. 19 of 42	Enlarged Plans Rooms #TB2-130, 136, 176 & 176B
M-2.2 Sht. 20 of 42	Enlarged Plans Rooms #TB@-154, 154A & 277
M-2.3 Sht. 21 of 42	Enlarged Plans Rooms #TA2-410, 414A, B, C, D, E, B@-110, 111
M-3.1 Sht. 22 of 42	Mechanical Equipment Schedules and Details
M-4.1 Sht. 23 of 42	Mechanical Controls
PLUMBING:	
P-1.0 Sht. 24 of 42	Overall Plan, Level One (not included in this submittal)
P-1.1 Sht. 25 of 42	Enlarged Plans Rooms #TB1-205A, 207A, 210 & 214
P-1.2 Sht. 26 of 42	Enlarged Plans Rooms #TA1-313, 314 & 322A
P-1.3 Sht. 27 of 42	Enlarged Plans Rooms #A1-224, B1-124
P-2.0 Sht. 28 of 42	Overall Plan, Level One (not included in this submittal)
P-2.1 Sht. 29 of 42	Enlarged Plans Rooms #TB2-130, 136, 176 & 176B
P-2.2 Sht. 30 of 42	Enlarged Plans Rooms #TB2-154, 154A & 277
P-2.3 Sht. 31 of 42	Enlarged Plans Rooms #TA2-410, 414A, B, C, D, E, B2-110 & 111
P-2.4 Sht. 32 of 42	Enlarged Plans Rooms #A2-203, 203A, 203B & 205
P-3.1 Sht. 33 of 42	Plumbing Fixture Specifications and Schedules
ELECTRICAL:	
E1.0 Sht. 34 of 42	Overall Plan, Level One, Notes, Legend, Fixture Schedule
E1.1 Sht. 35 of 42	Enlarged Plans Rms. #TB1-205A, 207A, 210, & 214 & TA1-322A
E1.2 Sht. 36 of 42	Enlarged Plans Rms. #TA1-313, 314, 322A
E1.3 Sht. 37 of 42	Enlarged Plans Rms. #A1-224, B1-124
E2.0 Sht. 38 of 42	Overall Plan, Level Two
E2.1 Sht. 39 of 42	Enlarged Plans Rms. #TB2-130, 136, 176, & 176B, Notes
E2.2 Sht. 40 of 42	Enlarged Plans Rms. #TB2-154, 154A & 277, Notes
E2.3 Sht. 41 of 41	Enlarged Plans Rms. #TA2-410, 414A, B, C, D, E, B2-110, 111, Notes
E2.4 Sht. 42 of 42	Enlarged Plans Rms. #A2-203, 203A, 203B, 204, Notes



VICINITY MAP
NORTH



LOCATION MAP
NORTH

CODE CRITERIA: IBC 2012 (IBC 2012)

OTHER GOVERNING CODES:
2012 INTERNATIONAL BUILDING CODE AS LOCALLY AMENDED
2011 NATIONAL ELECTRICAL CODE AS LOCALLY AMENDED
2012 INTERNATIONAL ENERGY CONSERVATION CODE AS LOCALLY AMENDED
2012 INTERNATIONAL EXISTING BUILDING CODE AS LOCALLY AMENDED
2012 INTERNATIONAL MECHANICAL CODE AS LOCALLY AMENDED
2012 INTERNATIONAL PLUMBING CODE AS LOCALLY AMENDED
2012 INTERNATIONAL FIRE CODE AS LOCALLY AMENDED

IEBC Chapter 3 - Compliance Methods
301.1.2 Prescriptive Compliance Method. "Alterations, repairs, additions...shall comply with the provisions of this chapter".

OCCUPANCY:
303.4 GROUP A-3

TABLE 503:
EXISTING CONSTRUCTION TYPE: 1A. FULLY SPRINKLED
Allowable area: UNLIMITED.
Allowable Height: UNLIMITED.

EXISTING AREA:
LEVEL 1:

Concourse A	31,266 sf
Concourse B	34,893 sf
Terminal	105,480 sf
Total	171,639 sf

LEVEL 2:

Concourse A	35,879 sf
Concourse B	38,372 sf
Terminal	110,907 sf
Total	185,159 sf

LEVEL 3:
Total: 25,247 sf
382,035sf

PROJECT WORK AREAS:
Level 1: 365 S.F. of improvements.
Level 2: 1181 S.F. of improvements.

508.3: Non-separated Occupancies. (EXISTING)



P.O. Box 40971
TUCSON, AZ 85717
TELEPHONE: 520-325-5847
WWW.HERZOGASSOCIATES.COM

TUCSON INTERNATIONAL AUTHORITY
FAMILY RESTROOMS PROJECT # 10217978
7250 S. TUCSON BLVD.
TUCSON, AZ. 85756
TITLE SHEET
LOCATION PLAN, INDEX, CODE CHECK

© DRAWINGS ARE PROTECTED BY COPYRIGHT. REPRODUCTION OR REUSE WITHOUT WRITTEN PERMISSION IS PROHIBITED.

DATE
2 JULY 18
DRAWN BY
SPH
CHECKED BY
CHK-BY
COMPUTER FILE NO.
C:\J\124



REGISTRATION
20175
STEVEN P. HERZOG
REGISTERED ARCHITECT
STATE OF ARIZONA
EXPIRES: 03-31-21

REVISIONS
1 30 JULY 2018

PROJECT NO.
JOB# 124

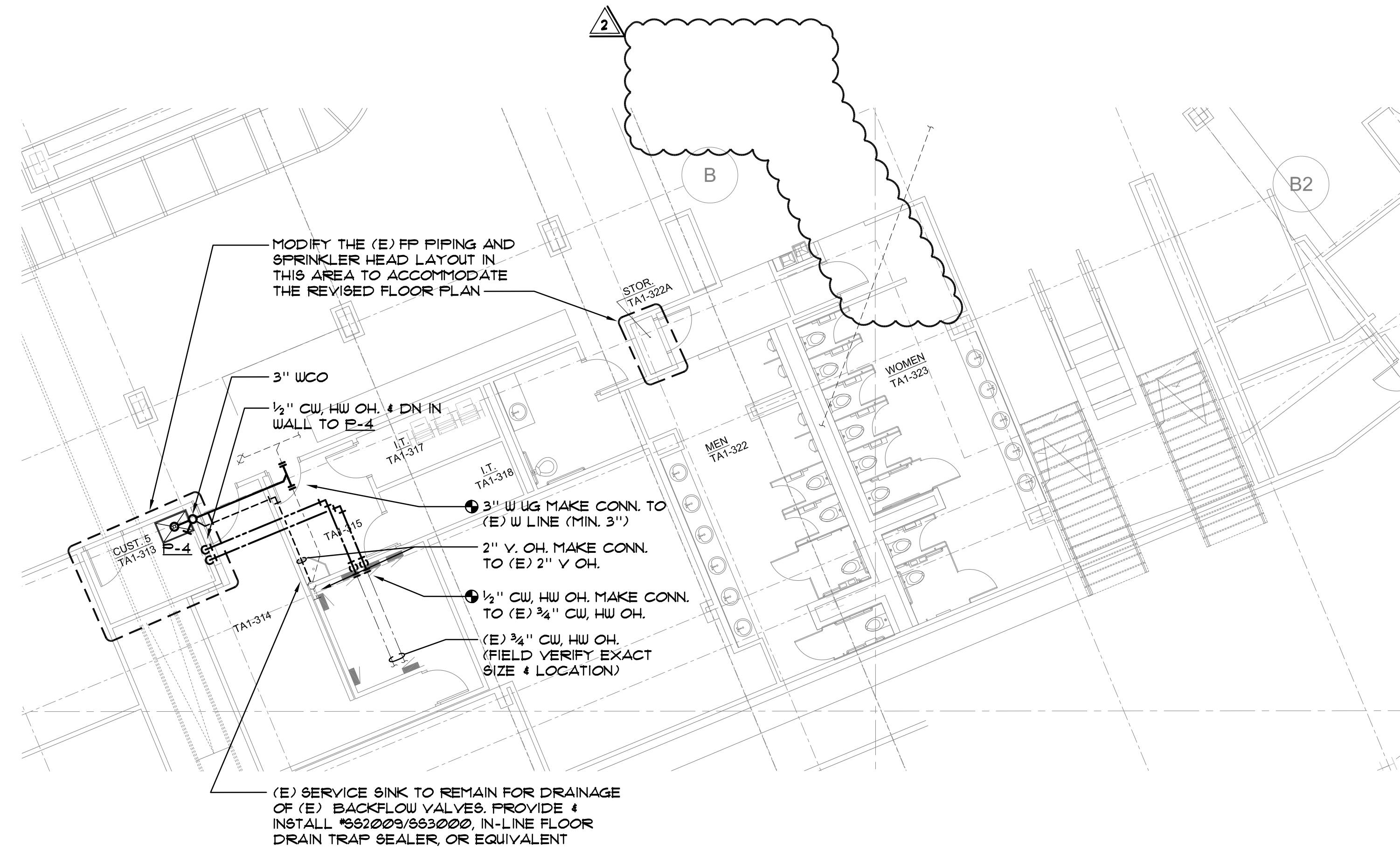
T-1



HERZOG ASSOCIATES, PLLC
ARCHITECTURE
PLANNING \ DESIGN

P.O. Box 40971
TUCSON, AZ 85717
TELEPHONE: 520-325-5847

WWW.HERZOGASSOCIATES.COM



1 REF 1/8"=1'-0" PLUMBING PLAN - ROOMS TA1-313, 314, 322

TUCSON INTERNATIONAL AUTHORITY
FAMILY RESTROOMS PROJECT # 10217978
7250 S. TUCSON BLVD.
TUCSON, AZ. 85756
LEVEL ONE
ENLARGED PLANS RMS # TA1 313,314 & 322A

© DRAWINGS ARE PROTECTED BY COPYRIGHT. REPRODUCTION OR REUSE WITHOUT WRITTEN PERMISSION IS PROHIBITED.

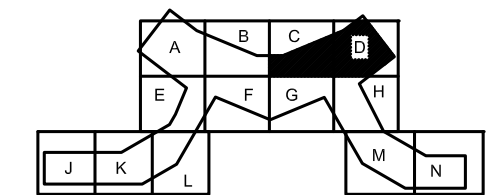
DATE 07/02/18
DRAWN BY D.T.
CHECKED BY C.M.
COMPUTER FILE NO. C:\J\

ADAMS
AND ASSOCIATES ENGINEERS, PLLC
MECHANICAL AND FIRE PROTECTION ENGINEERS, PLLC.
6422 E. FREEDWAY BLVD., Suite 110
TUCSON, ARIZONA, 85710
(520) 313-3050
www.adamsengrs.com
PROJECT No. 17167



REVISIONS
18-07-31 REV-2 ADDEN-2

PROJECT NO. JOB# 124



P-1.2



HERZOG ASSOCIATES, PLLC
ARCHITECTURE
PLANNING \ DESIGN

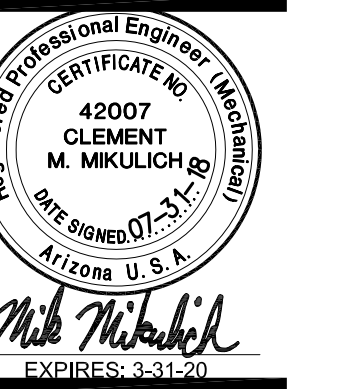
P.O. Box 40971
TUCSON, AZ 85717
TELEPHONE: 520-325-5847

WWW.HERZOGASSOCIATES.COM

TUCSON INTERNATIONAL AUTHORITY
FAMILY RESTROOMS PROJECT # 10217978
7250 S. TUCSON BLVD.
TUCSON, AZ. 85756
**LEVEL TWO
ENLARGED PLANS RMS #TA2-410, 414A, B, C, D, E,
& B2-110**

© DRAWINGS ARE PROTECTED BY
COPYRIGHT. REPRODUCTION OR
REUSE WITHOUT WRITTEN
PERMISSION IS PROHIBITED.

DATE
07/02/18
DRAWN BY
D.T.
CHECKED BY
C.M.
COMPUTER FILE NO.
C:\



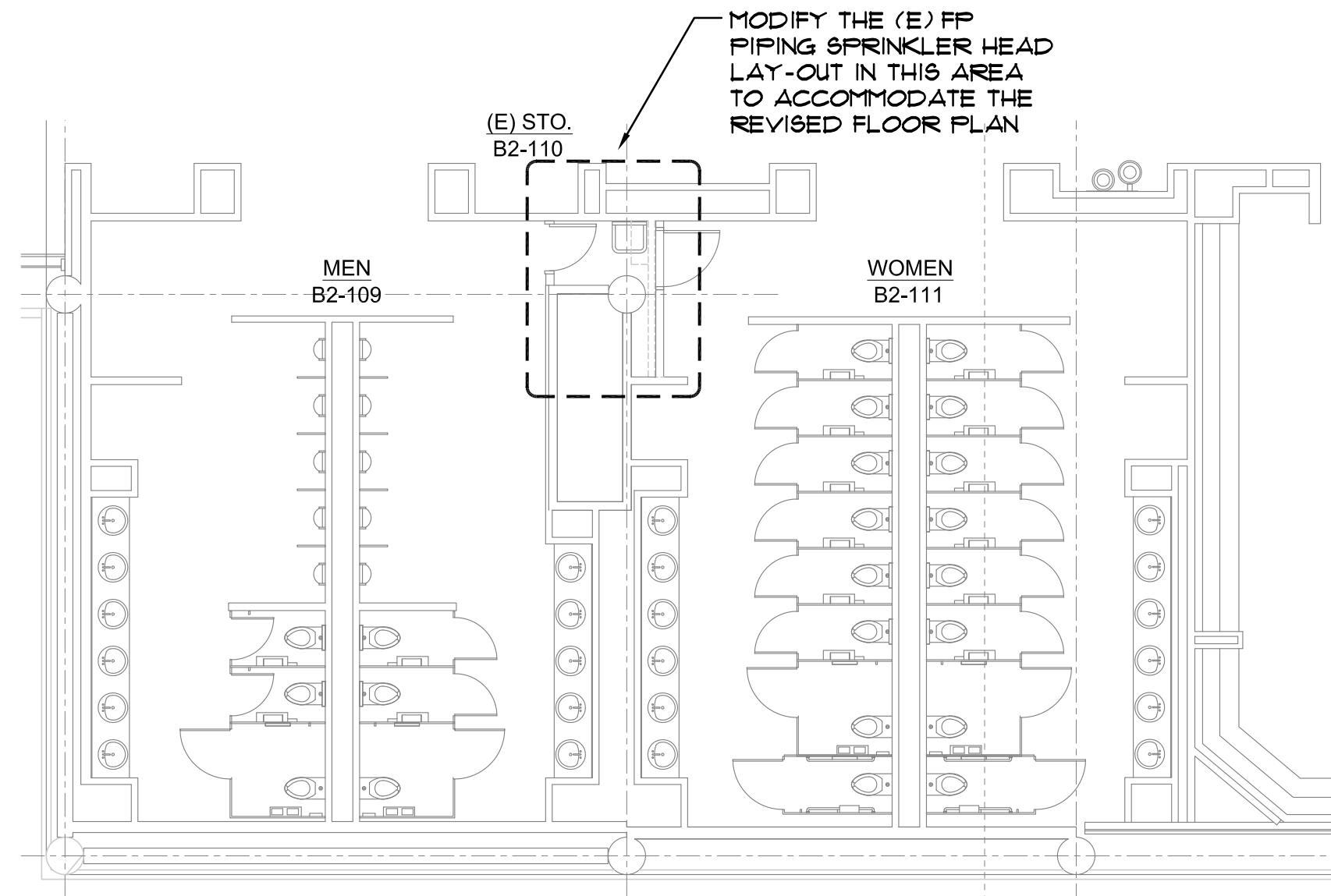
ADAMS
AND ASSOCIATES ENGINEERS, PLLC
MECHANICAL AND FIRE
PROTECTION ENGINEERS, PLLC.
6422 E. STEEDMAN BLVD., SUITE 110
TUCSON, ARIZONA, 85710
(520) 323-2858
www.adamsengr.com
PROJECT No. 17167

REVISIONS
18-07-31 REV-2 ADDN-2

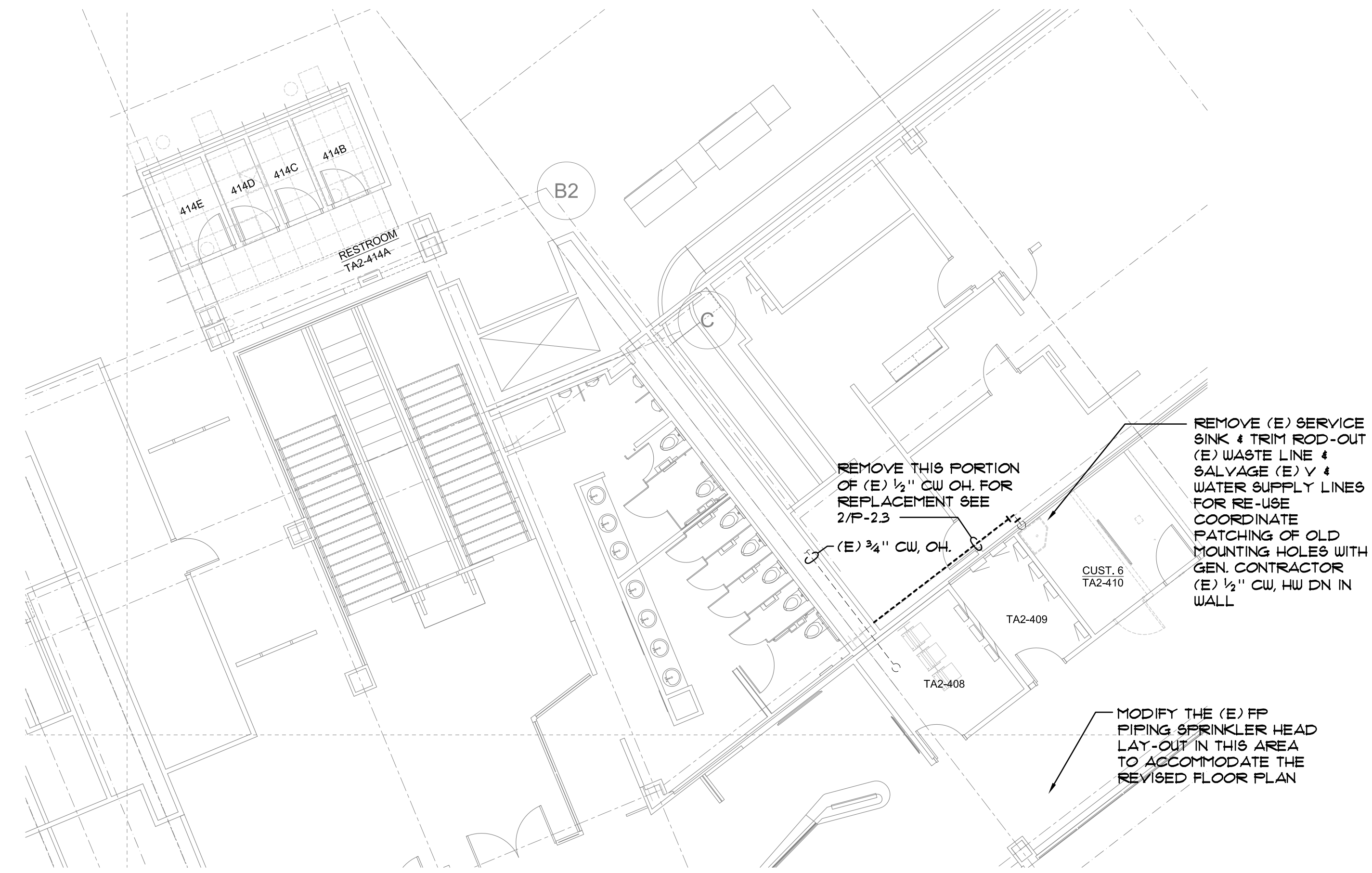
PROJECT NO.
JOB# 124

P-2.3

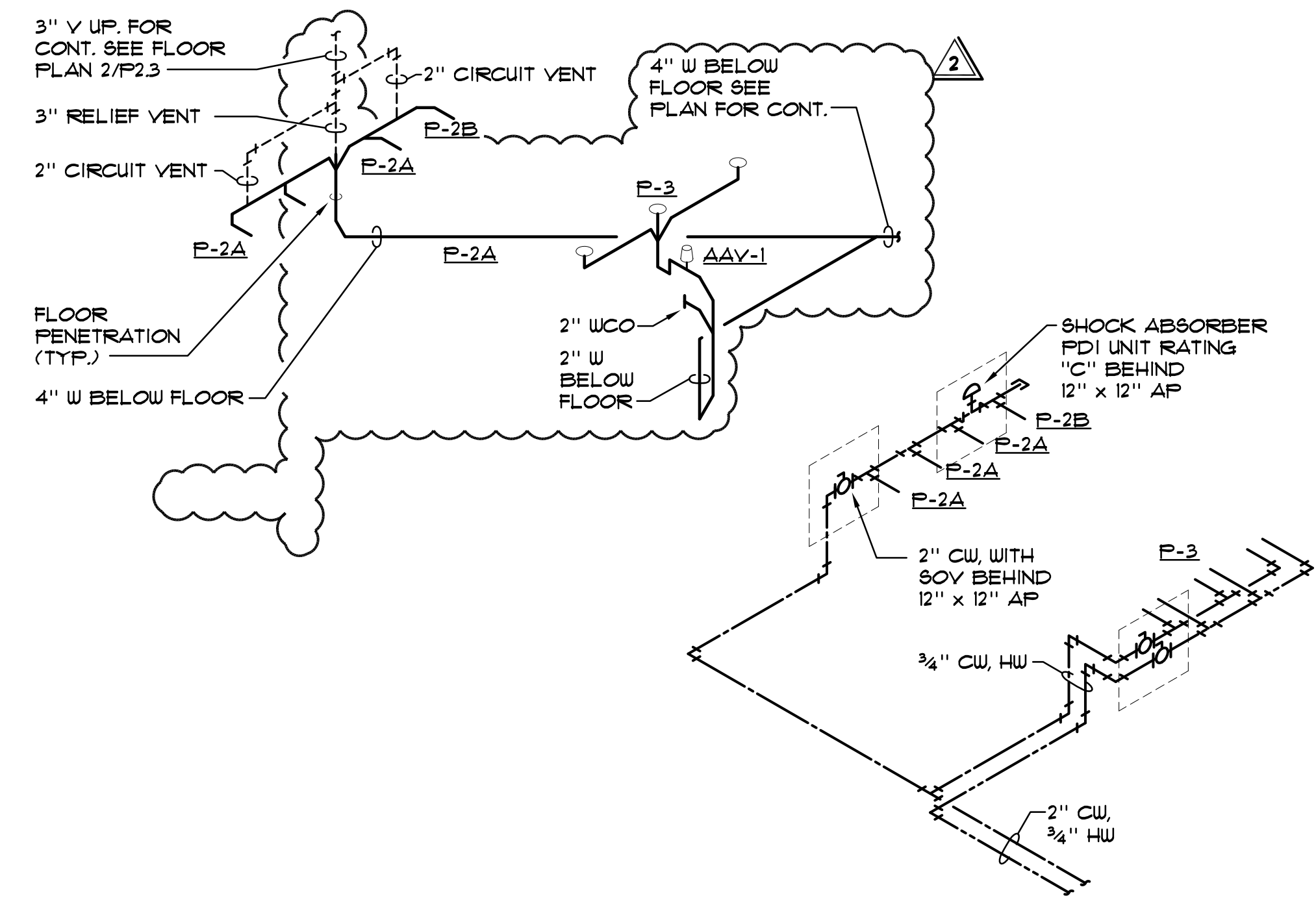
SHEET OF



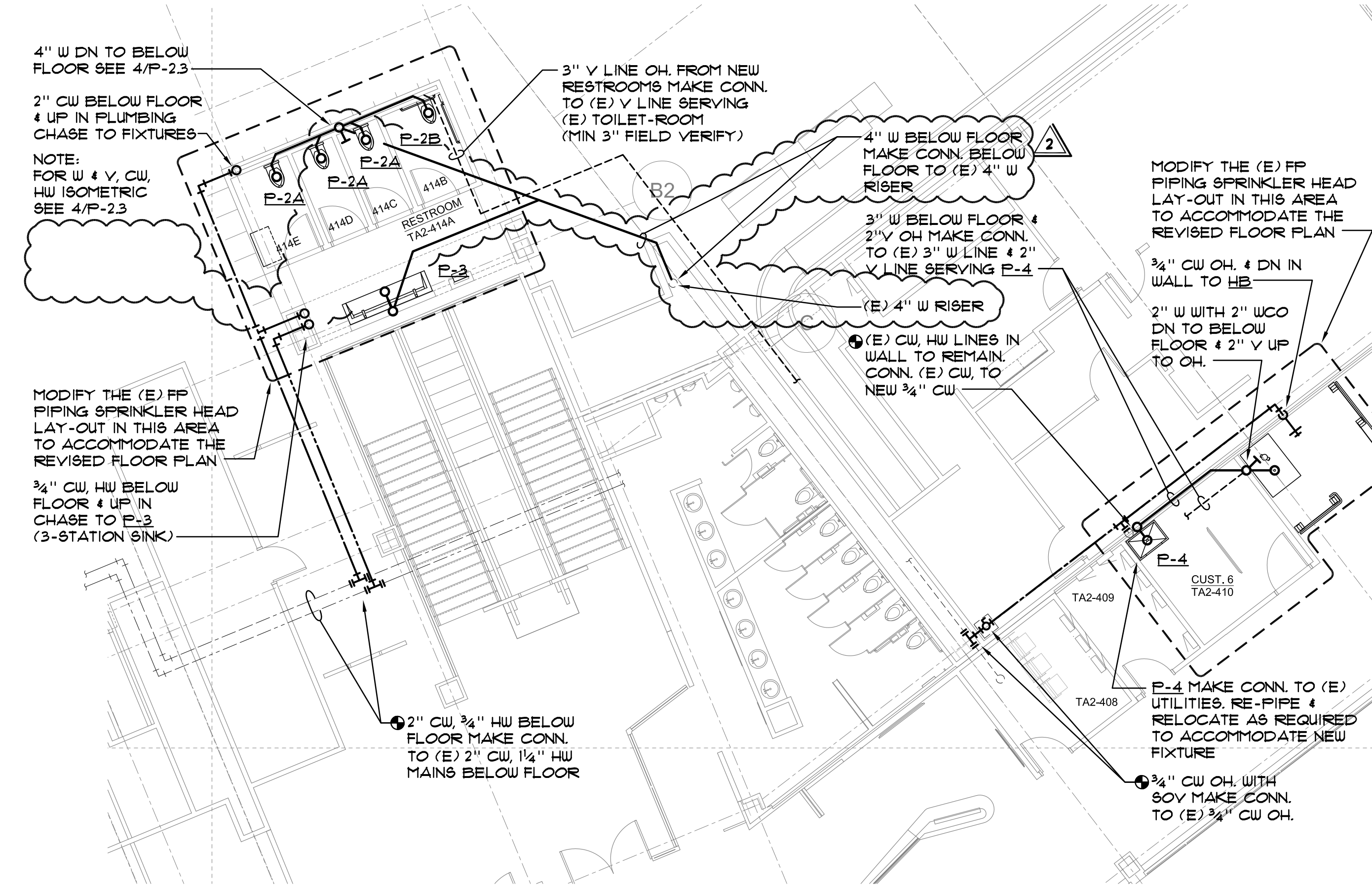
3 PLUMBING PLAN - ROOMS B2-110-111
1/8"=1'-0"



1 PLUMBING DEMOLITION PLAN - ROOMS TA2-410 & 414
1/8"=1'-0"



4 W & V CW, HW ISOMETRIC
N.T.S.



2 PLUMBING PLAN - ROOMS TA2-410 & 414A, B, C & D
1/8"=1'-0"

